



ABENGOA

CSP: A Time for Solid Players

Santiago Seage

Analyst & Investor Day

May 2012

- This presentation contains forward-looking statements and information relating to Abengoa that are based on the beliefs of its management as well as assumptions made and information currently available to Abengoa.
- Such statements reflect the current views of Abengoa with respect to future events and are subject to risks, uncertainties and assumptions.
- Many factors could cause the actual results, performance or achievements of Abengoa to be materially different from any future results, performance or achievements that may be expressed or implied by such forward-looking statements, including, among others, changes in general economic, political, governmental and business conditions globally and in the countries in which Abengoa does business, changes in interest rates, changes in inflation rates, changes in prices, changes to national and international laws and policies that support renewable energy sources; inability to improve competitiveness of our renewable energy services and products; decline in public acceptance of renewable energy sources; legal challenges to regulations, subsidies and incentives that support renewable energy sources; inability to obtain new sites and expand existing ones; changes in business strategy and various other factors.
- Should one or more of these risks or uncertainties materialize, or should underlying assumptions prove incorrect, actual results may vary materially from those described herein as anticipated, believed, estimated, expected or targeted.
- Abengoa does not intend, and does not assume any obligations, to update these forward-looking statements.

1

CSP: the clean dispatchable power required to do more intermittent renewables

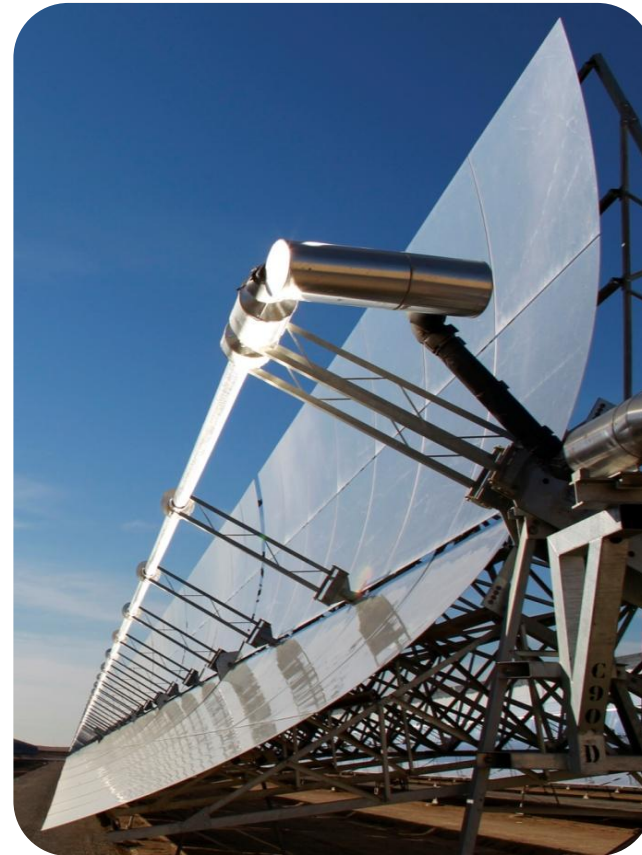
2

Abengoa: the world CSP leader

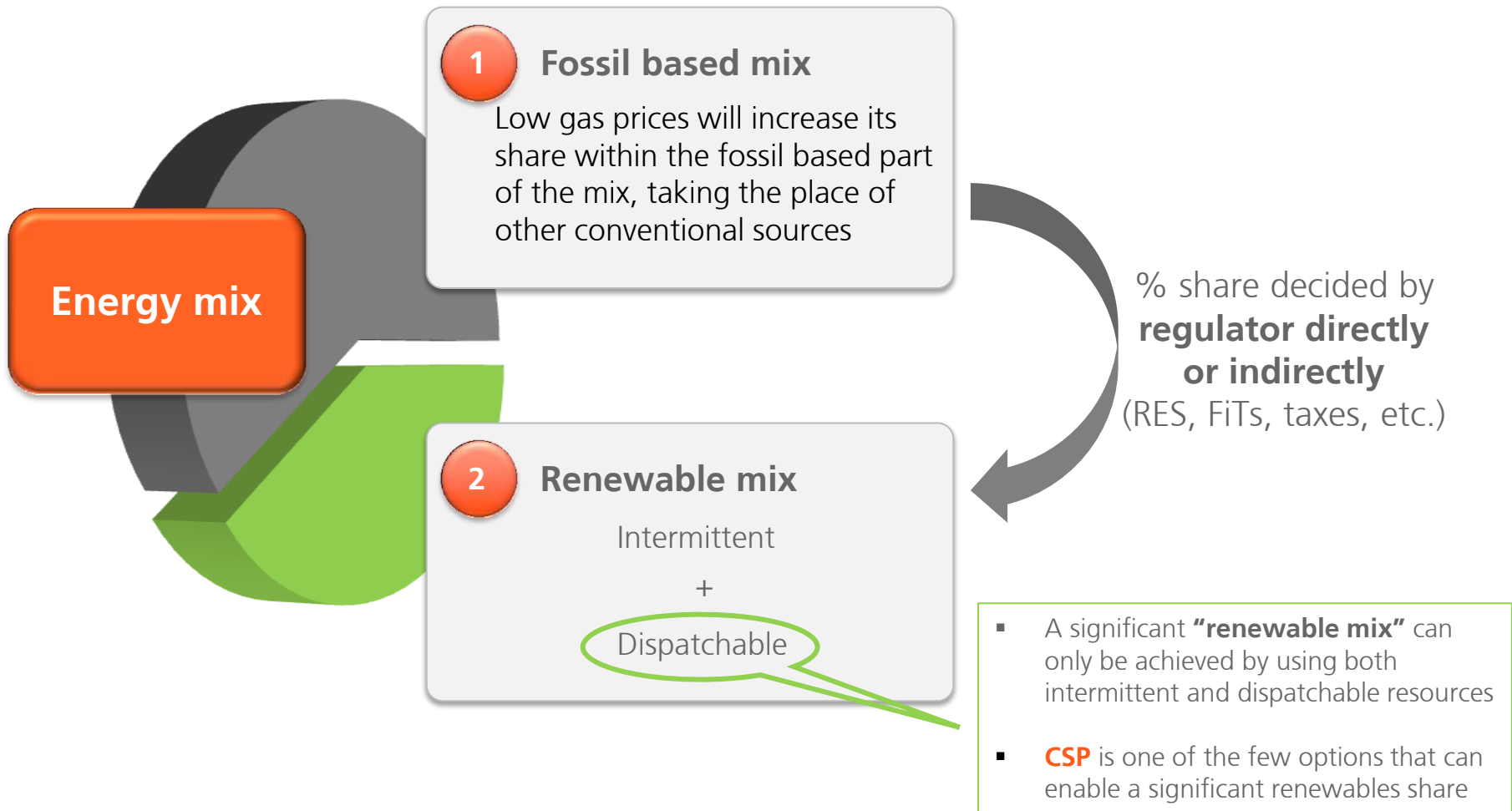
Solar Tower



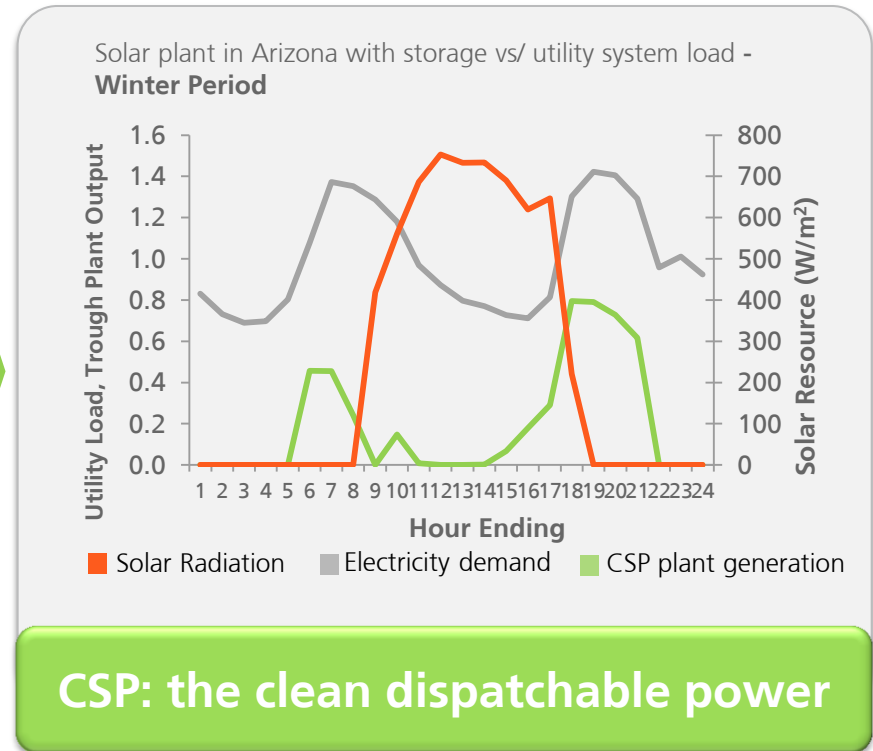
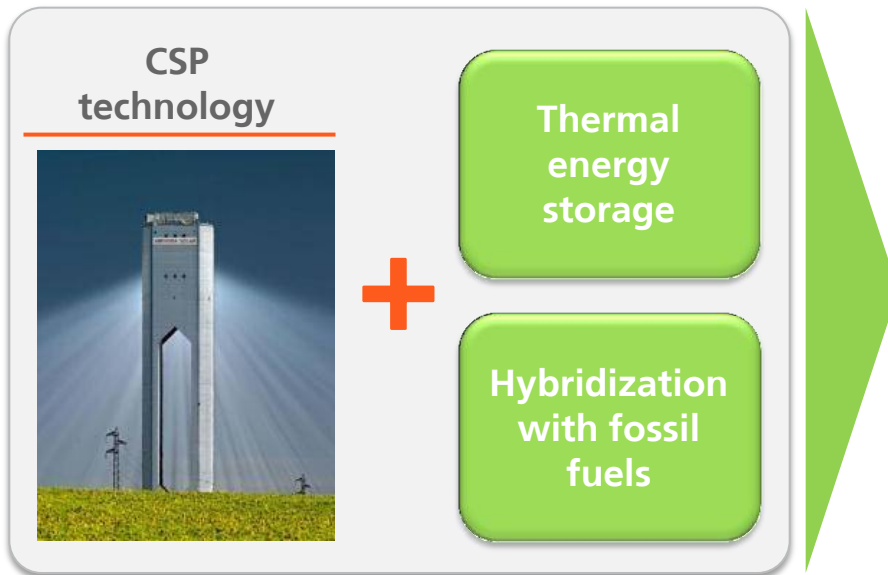
Solar Trough



Renewables share is a regulator's decision. CSP is necessary to enable it



As renewables share in the energy mix becomes higher, CSP's dispatchability becomes more necessary and valued



NREL* estimates the value of dispatchability in up to 4 cents/kWh relative to non-dispatchable energy sources

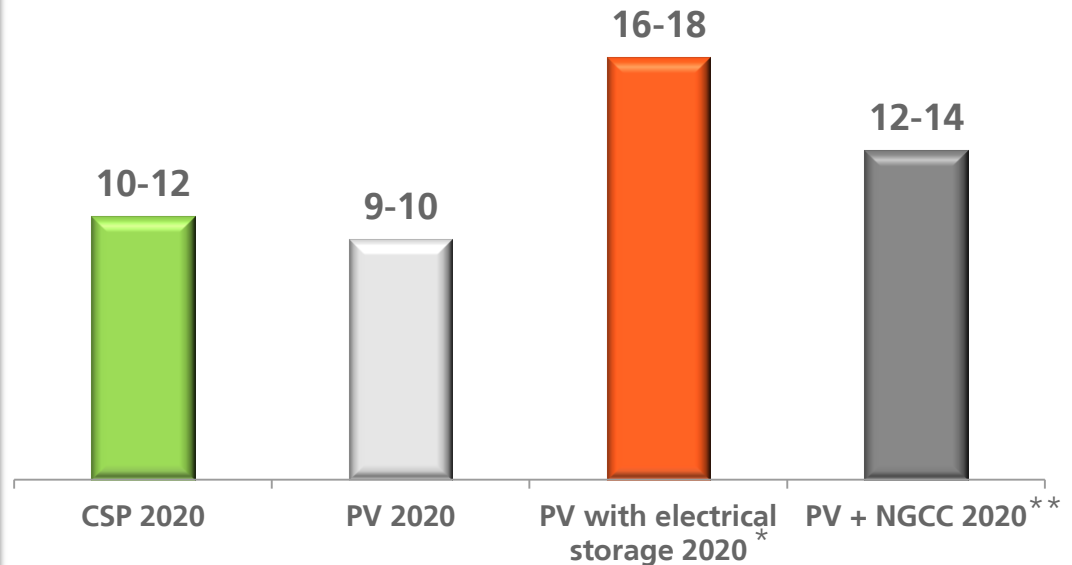
(*) NREL study "Tradeoffs and Synergies between CSP and PV at High Grid Penetration"

PV and CSP are two different, but complementary, products

- Even if PV modules had a cost of 0,3 USD/Wp in 2020, PV is intermittent and will **not** be able to offer dispatchability
- **A utility would need to cover wind and PV** with idle combined cycles, electric storage or a dispatchable energy source like CSP



c\$ / kWh (Southwest US)

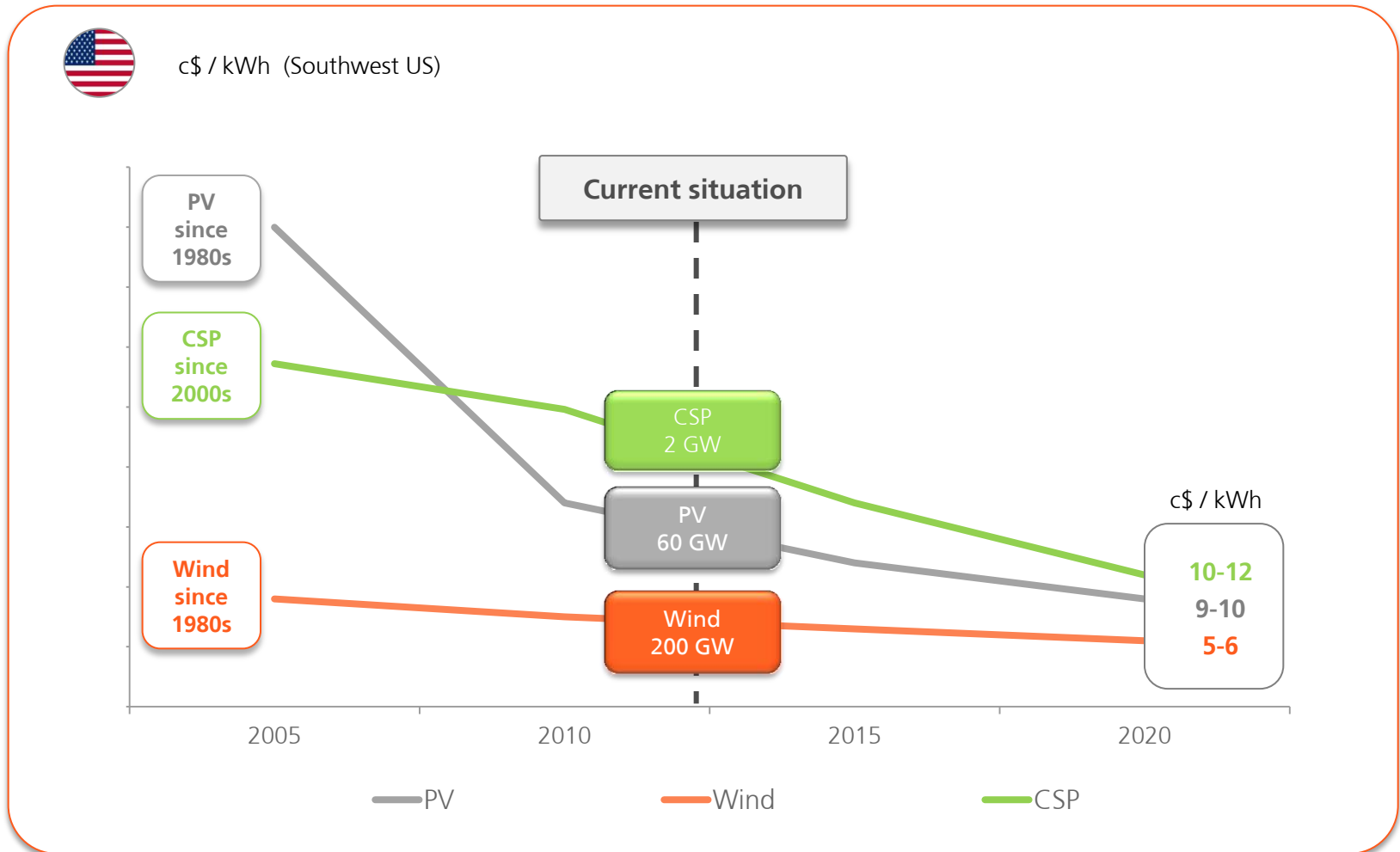


(*) PV with electrical storage (nominal power electrical storage = 50% nominal power PV)

(**) PV with 50% of natural gas combined cycle (NGCC) back-up capacity

Source: Abengoa in-house analysis without any subsidies

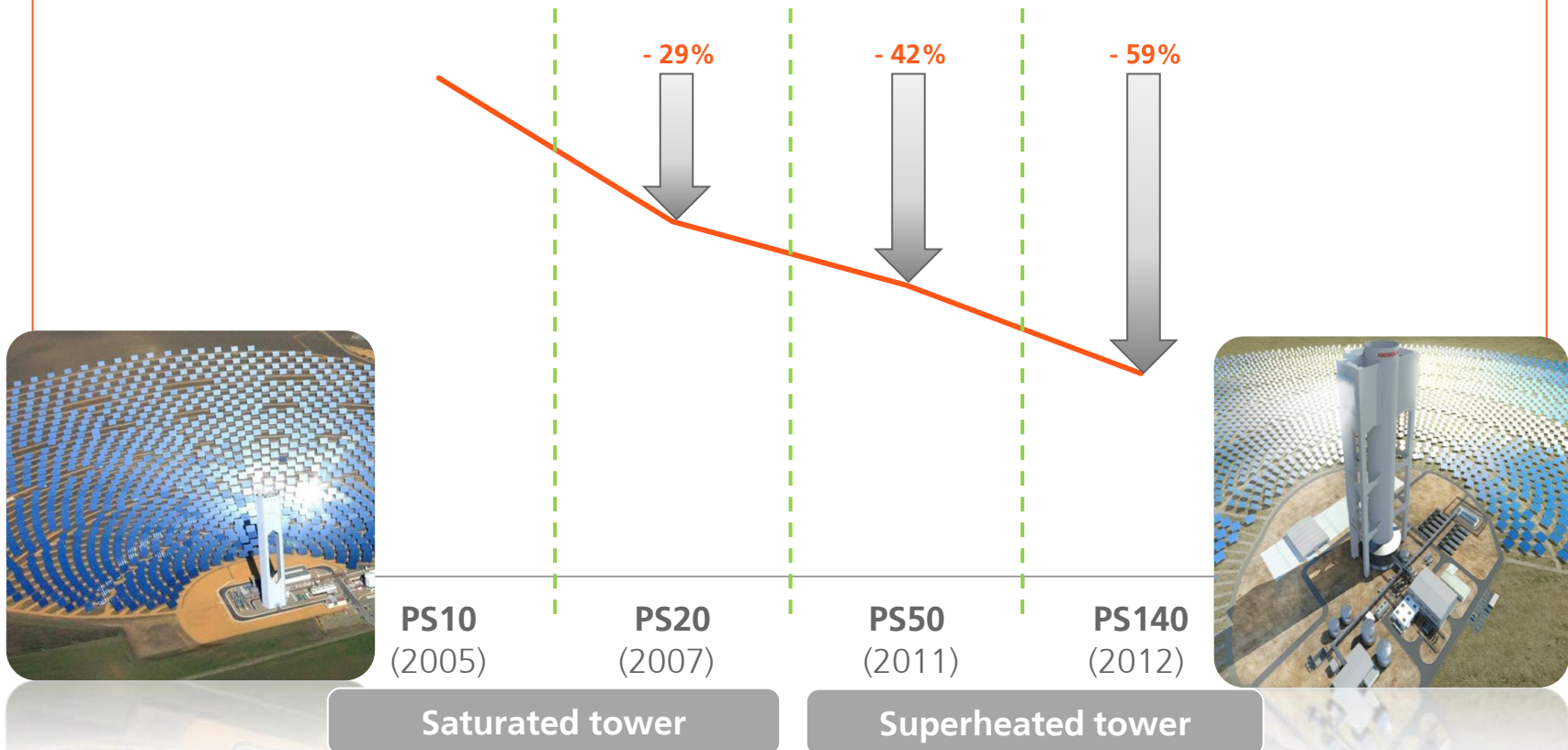
CSP has a huge cost reduction potential, especially considering that other renewables already have significantly more installed capacity



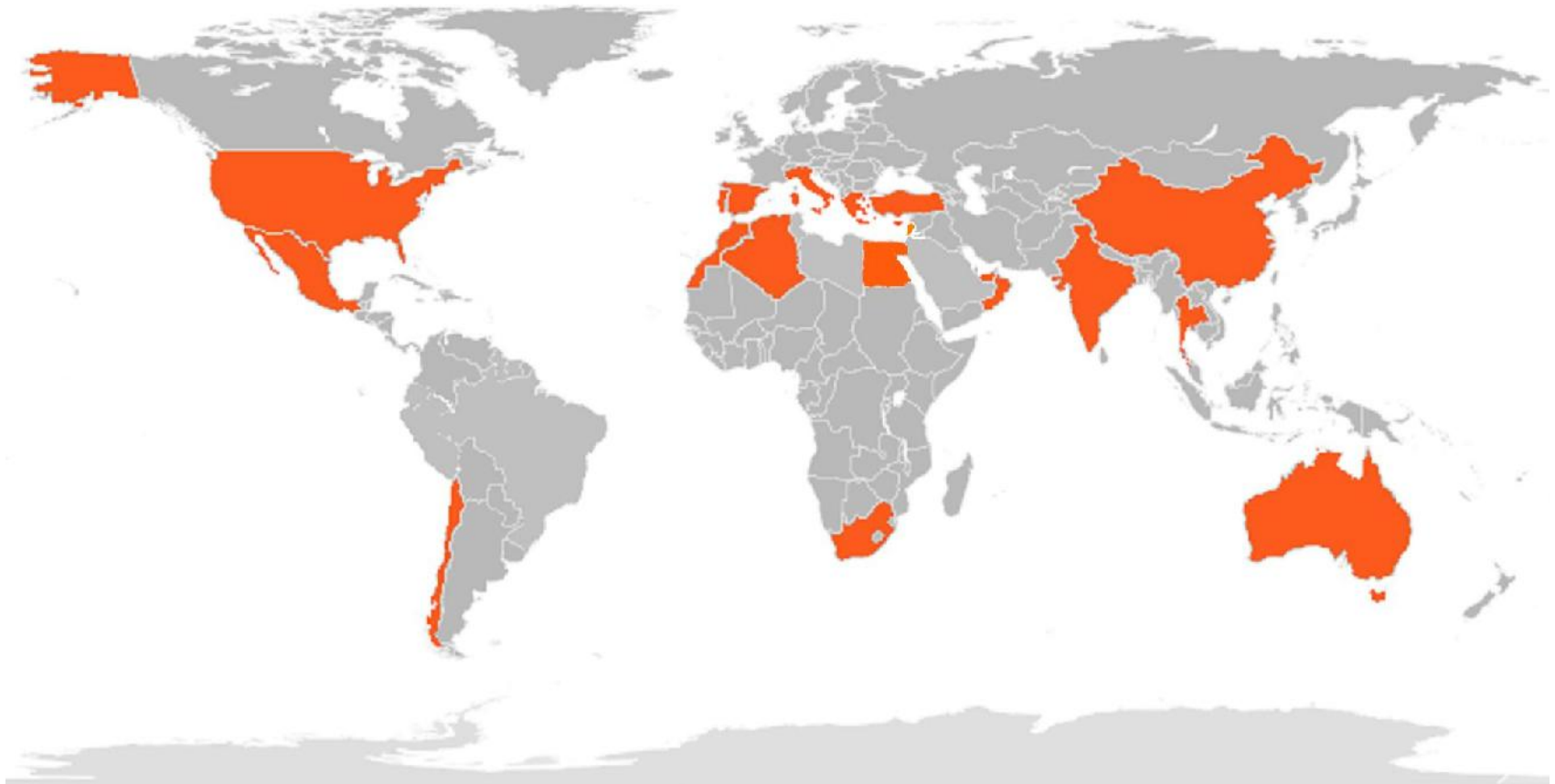
Source: Abengoa in-house analysis

Abengoa's CSP has followed its predicted roadmap and will keep reducing costs according to it

Capex /generation



Countries where CSP is already a reality

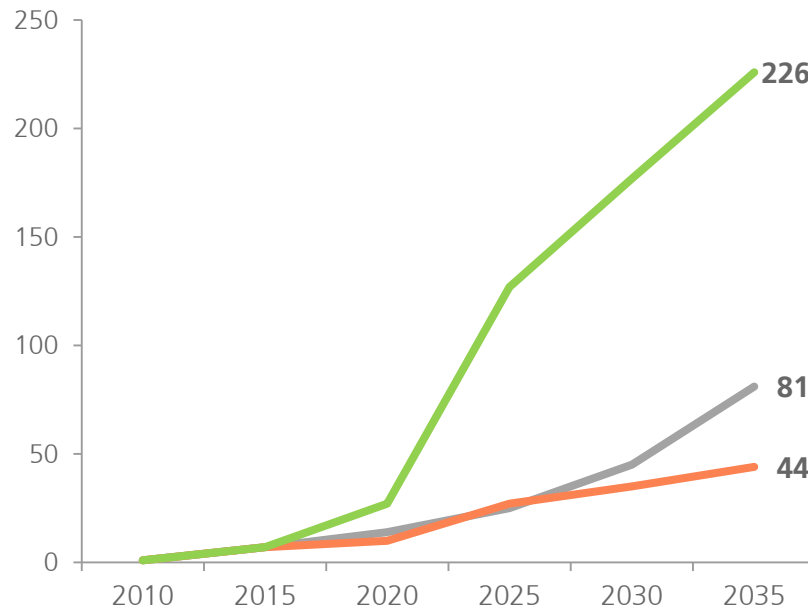


Countries with CSP plants in operation, construction, existing regulation or bidding processes under way

CSP will be a significant part of the future energy mix

IEA CSP forecast

GW



- 450 Scenario:** adds new policies to limit the concentration of greenhouse gases to 450 ppm CO₂-eq
- New Policies Scenario:** incorporates the new policies that have been announced by Governments around the world
- Current Policies Scenario:** includes continuation, without change, of the policies that had been adopted by mid-2011

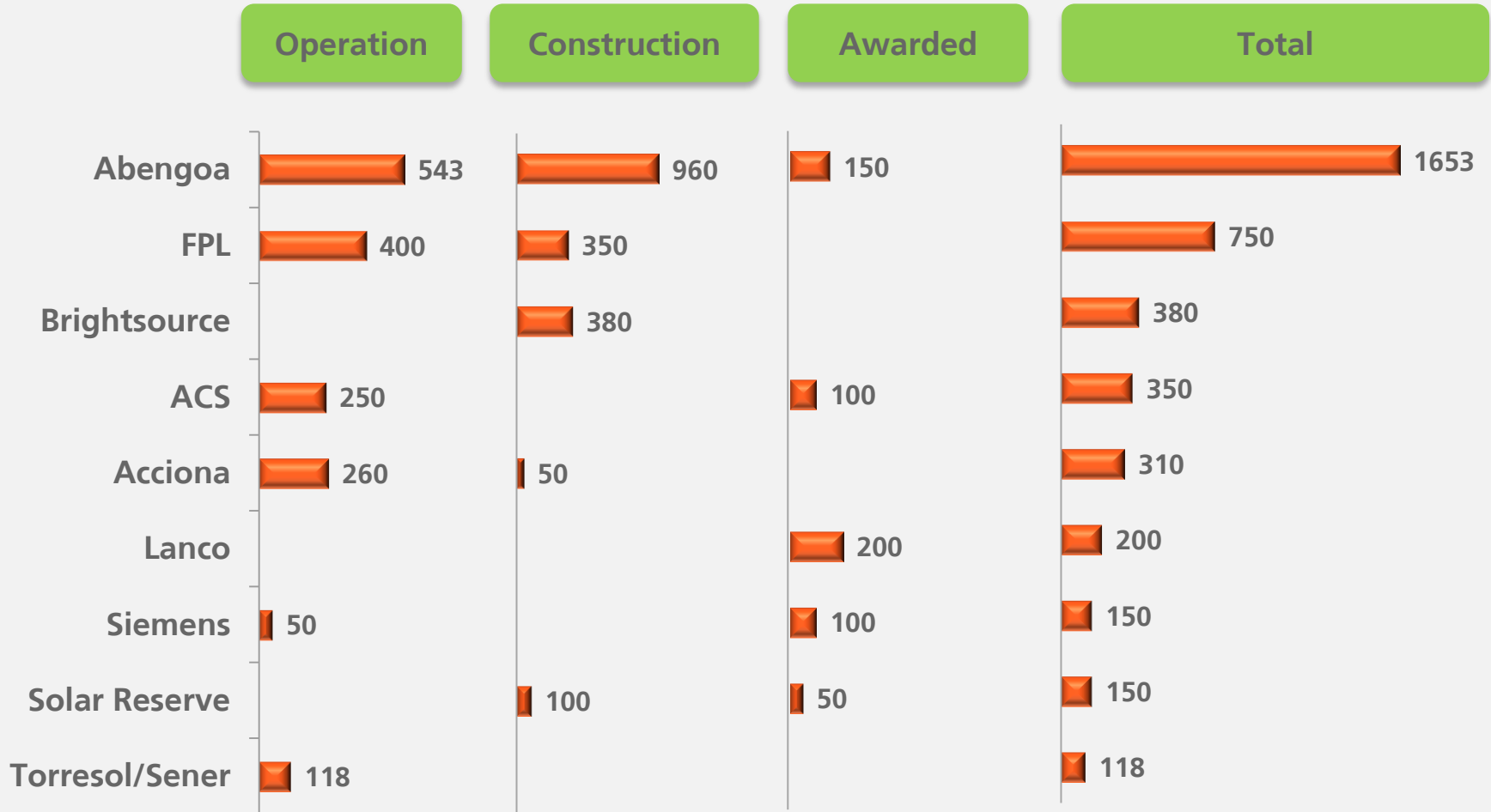
1

CSP: the clean dispatchable power required to do more intermittent renewables

2

Abengoa: the world CSP leader

Abengoa is the largest CSP player in the world



Source: Public information

3 key concepts that make us world leader

1

Technology

Technology as a source of competitive advantage

2

Discipline

Discipline leading to excellence in operation and construction

3

Diversification

Abengoa is the only global CSP player

1

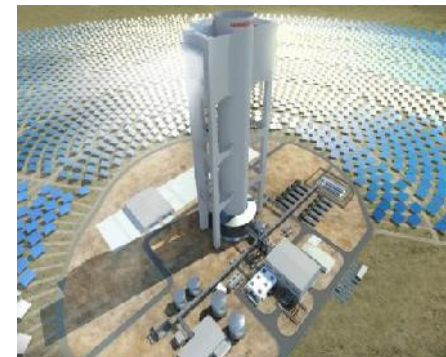
Technology as a competitive advantage for Abengoa

R&D

Pilot Plant or Real Test

Commercial Project

- +100 in-house researchers
- R&D center in Denver, CO
- R&D center in Seville, Spain
- Abengoa Research
- Collaboration with key research institutions and companies worldwide



1

Abengoa is a technology leader in the 3 key areas within CSP

Tower



Trough



Storage



1

3 new technologies with significant cost reduction potential

3rd generation trough

Currently working in a 3rd generation trough pilot plant

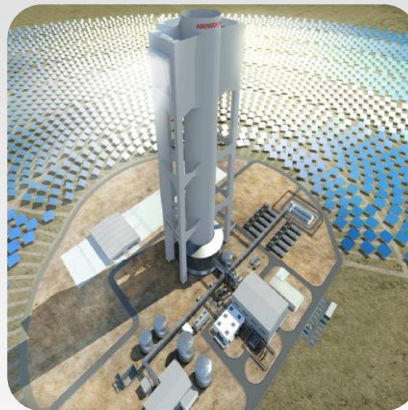


► **Technology status:**

- New large aperture collector designed
- New mirrors and reflective materials being tested
- New optics under analysis
- New fluids being tested
- New key components being tested

Superheated Tower

Commercial tower is already a reality and we keep on working in larger towers



► **Technology status:**

- Commercial
- Exhaustive receiver tests ran successfully in Eureka
- Storage
- PS50 engineering ready
- PS140 engineering will be ready soon

Molten Salt Tower

Molten salt tower pilot plant just built in Solúcar platform



► **Technology status:**

- Pilot plant ready
- Proprietary receiver
- Commercial tower engineering under development
- Research on higher temperature materials and salts

1

2 new technologies with high potential in many markets and extremely competitive costs

ISCC & ISCoal

Currently working in hybridization with all types of fuels and higher efficiencies



► **Technology status:**

- 150 MW ISCC commercial plant in operation in Algeria
- ISCoal integration under development
- More efficient solar-gas technologies under development

Solugas

Solugas is a revolutionary concept of solar-gas hybridization involving the use of gas turbines.
LCOE will be extremely competitive



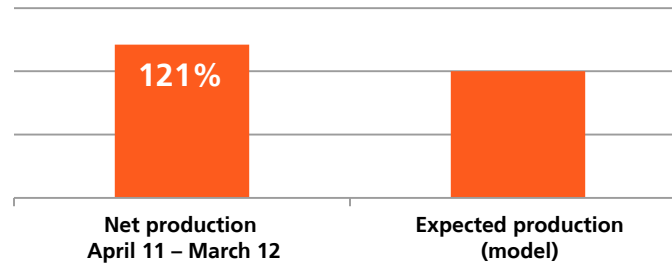
► **Technology status:**

- Pilot plant already built (April 2012) and starting up
- Research to increase temperature from 800°C to 1000°C
- Commercial tower engineering under development
- Research on higher temperature materials and salts

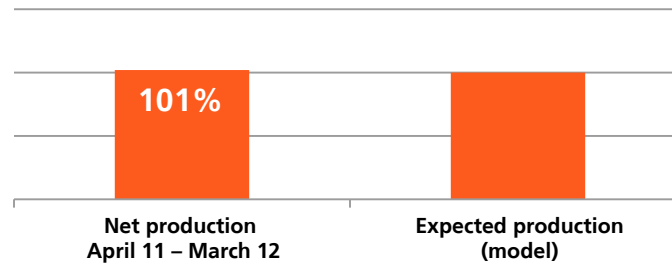
2

Our discipline leads to good performance in operating plants

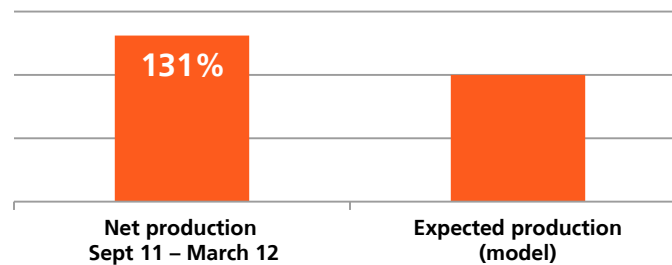
PS20



Solnova 1



Helioenergy 1

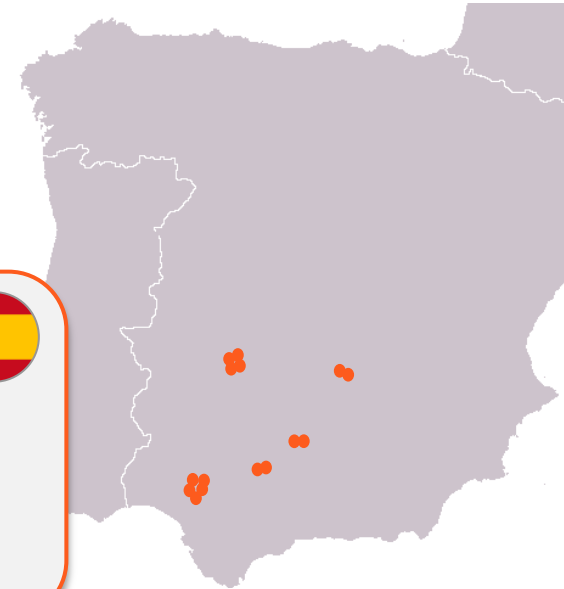


2

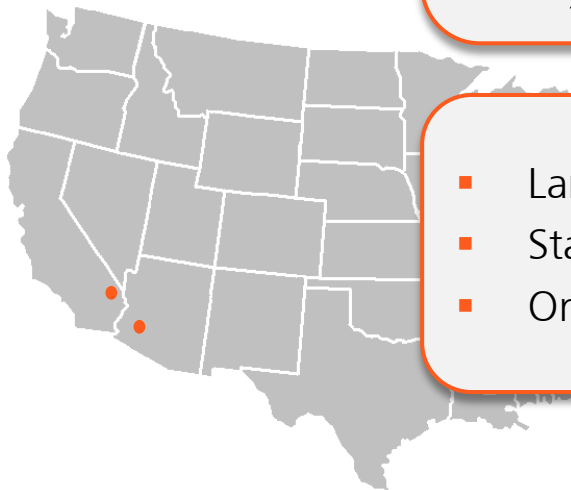
Critical mass as a key factor for operational performance

- Global excellence in O&M
- 15 plants in operation by the end of 2012
- Technology know how as a key competitive advantage

- Plants co-located in complexes
- Plants share same basic design
- Standardized main equipment
- Shared specialists in key areas, logistics, systems, procedures



- Large size plants
- Standardized main equipment
- One O&M team

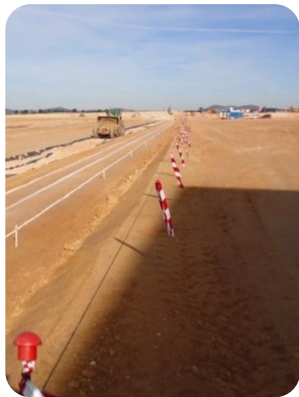


Business Model: «New Technology + Efficient Developer & Operator»



Develop diversified portfolio of technologies and key components for internal and third-party use

- Technology development is key to be competitive
- Key to secure good partners
- Incremental value creation by sale of technology and key components to third parties
- Additional profitability in own projects

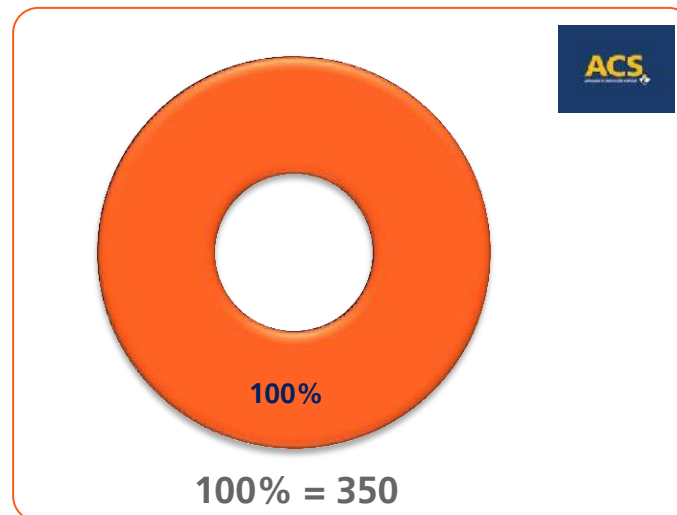
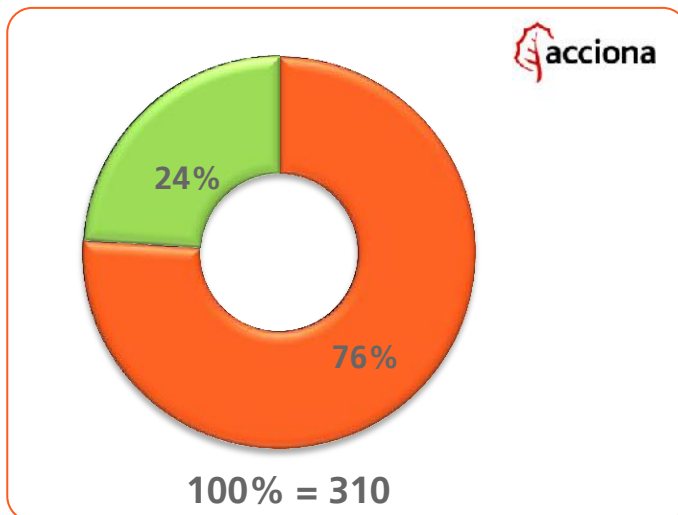
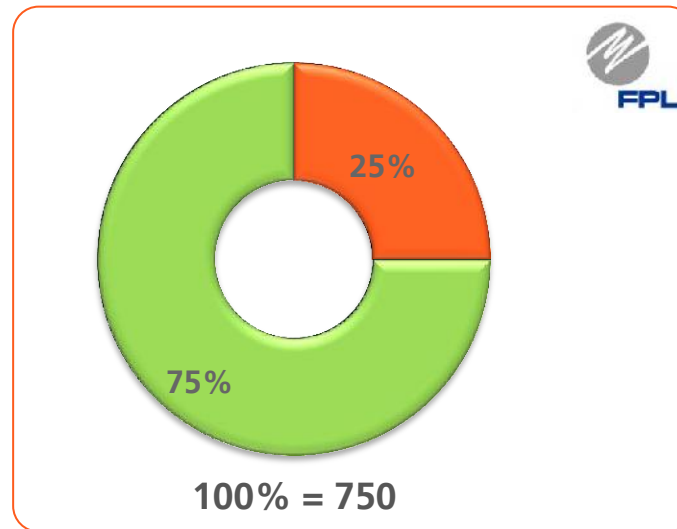
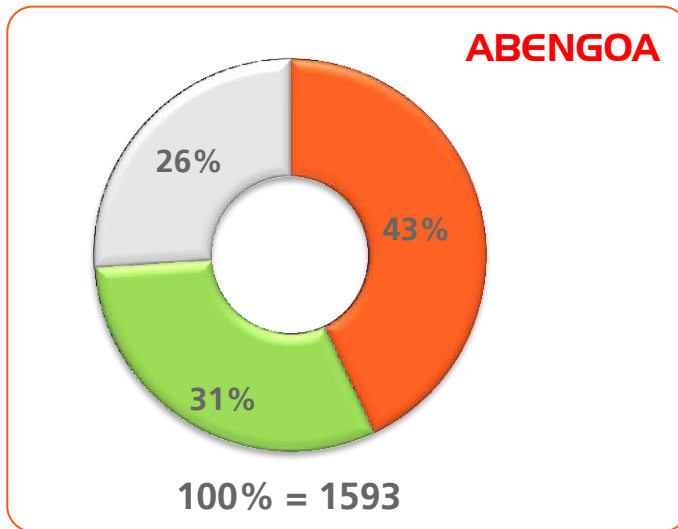


Develop, own and operate a large diversified portfolio of CSP plants

- In-house development teams in 12 key markets
- Diversified by geography
- Selected partner of choice by large international players
- Own and operate, divesting selectively when it maximizes value
- Project by project approach

3

Abengoa, through geographical diversification, avoids concentration risk



- Spain
- USA
- Others

150 MW awarded in South Africa through a competitive tender



KaXu Solar One

- 100 MW trough plant
- 3 hours molten salts storage
- Dry cooling technology
- 51% Abengoa & 49% IDC*
- Construction start expected in H2 2012



Khi Solar One

- 50 MW superheated tower
- 2 hours steam storage
- Dry cooling technology
- 51% Abengoa & 49% IDC*
- Construction start expected in H2 2012

*IDC = Industrial Development Corporation, the largest financial development institution in South Africa

CSP: clean dispatchable power competing alone and hybridized with gas with combined cycles by 2020

Already a global market with high growth potential

CSP is following its predicted cost reduction roadmap

**Abengoa is a unique CSP player:
technology leader and efficient developer and operator of assets**

Asset portfolio of 1,593 MW, without including development





ABENGOA

Thank you!

Analyst & Investor Day

May 2012